

MAXIM3DTM

FREEDOM IN DESIGN



CASE REPORT

MAXIM 3D

EAGLET ESP

DR. ALEX GIBBERMAN
20/20 EYECARE
LOVELAND, OH

OFFSET MULTIFOCAL LENSES WITH ACCUVAULT FOR PINGUECULA

R.G. a 55-year-old Hispanic male

Keratoconus both eyes, right eye mild, left eye moderate

Patient presented for a scleral lens fitting to obtain improved vision at distance and near

Ocular history

- History of high astigmatism
- No history of contact lens wear
- Vision in the left eye was never as good as the right eye
- Never offered other options previously

Discussed the option of custom scleral lenses

- Goal to improve vision at all distances with scleral lenses
- R.G. expressed interest in multifocal scleral lenses

Pertinent Medical History

- Well-controlled diabetic

Pertinent Social History

- Frequently drives from Cincinnati to Mexico for over 24 hours straight without stopping other than gas and food.

BCVA with manifest refraction

OD -0.75-5.75x179 20/25

OS -1.25-7.50x170 20/60

Pachymetry

OD 454 μm

OS 444 μm

Right eye dominant

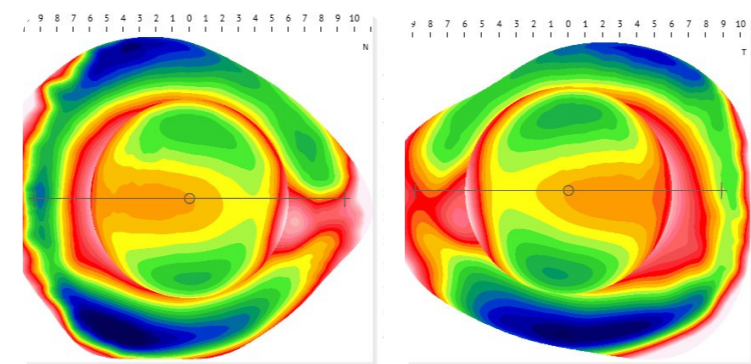
Corneal examination

OD mild central thinning without scarring

OS moderate thinning without scarring

Eaglet Eye ESP was performed.

Diagnostic lenses were selected



Maxim diagnostic set lenses

OD 7.67/15.9

Sag 4.57

SOR (add value) OR -0.50 20/20 vision

OS 7.67/15.9

Sag 4.57

SOR (add value) +0.50 20/20 vision

Maxim 3D multifocal lenses were designed based on ESP data

Initial Maxim 3D MF lenses

OD distance centered aspheric design

OS center near periscope multifocal

Fit

Inferior temporal lens decentration more so OS

Left lens designed using OnPoint system

Ability to measure the amount of decentration

In this case, decentration was 5 notches at 135°

Initial lenses

Two right lenses designed

Lens 1 – based off of a diagnostic fitting set and fitting notes

Lens 2 – based off of ESP with AccuVault due to a nasal pinguecula

One left lens

OD Lens 1 – no AccuVault

VA 20/20 near 20/30 SOR pl

Good comfort

Mild awareness in area of pinguecula nasal

Ideal clearance with mild, yet acceptable, mild inferior decentration

OD Lens 2 – with AccuVault

VA 20/20 near 20/30 SOR pl

Comfortable computer vision

Outstanding comfort, much improved compared to prior lens

No lens awareness

Improved centration

OS

VA 20/20 near 20/25 SOR pl

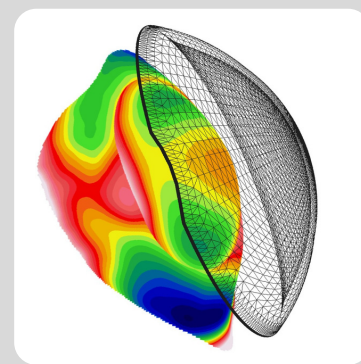
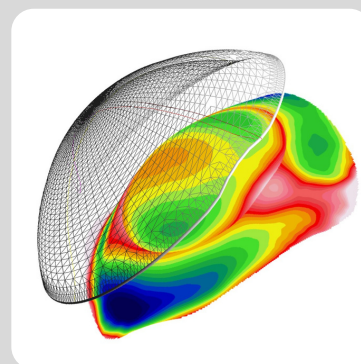
comfortable computer vision

Lens designed without AccuVault over nasal pinguecula

Lens was comfortable, however not as comfortable as the right lens with AccuVault, wanted to vault the pinguecula for the left eye as well

Central clearance 400 μm – plan to reduce 100 μm

Lens edges were too flat, especially superior, plan to steepen edges accordingly and add AccuVault over pinguecula



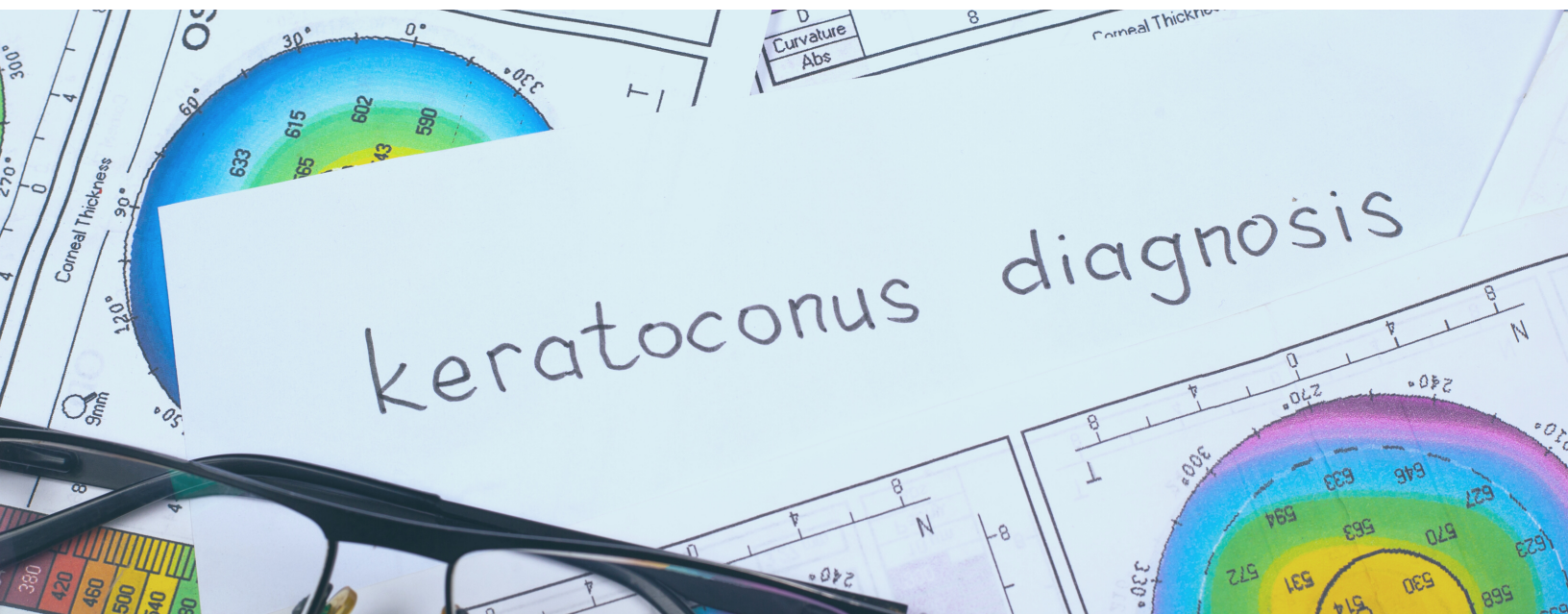
Lens was steepened at the edges 360 as well as additional steepening in the superior quadrant along with AccuVault nasally over the pinguecula. Central clearance reduced by 100µm. With these changes, the fit and comfort were ideal. Distance vision in this eye improved to 20/20. Near vision was 20/25. Comfortable computer and near vision were obtained.

Clinical pearls

- Determine dominant eye
- Multifocal success with improved alignment using scleral profilometry
- Ideal lens customization based on patient needs

"Acculens continues to stay ahead of the curve with its Maxim 3D lens. This lens improves upon current quadrant-specific technology and allows you to make edge-specific changes at any clock hour instead of just 12/6 and 3/9. Furthermore, this can be incorporated with their many multifocal designs. If the patient has residual astigmatism and needs a front toric along with a quad-specific multifocal, NO PROBLEM! Acculens maxim 3D has you covered."

Alex Gibberman OD



SCAN. SEND. DISPENSE.

(800) 525-2470

