

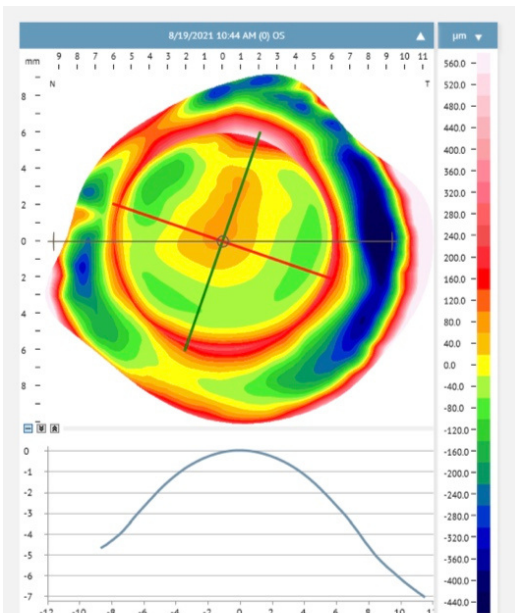
## CASE REPORT

DR. MICHAEL EVERSON  
MEMORIAL EYE CENTER  
SUGARLAND, TX

### CORNEAL SCARRING SECONDARY TO PENETRATING GLOBE INJURY



### MAXIM 3D EAGLET ESP



B.M. is a 44-year-old Hispanic male

- OS Aphakia, Corneal Ectasia secondary to Trauma OS, Corneal Scarring OS
- Presented for a scleral lens fitting to obtain better vision OS

Ocular history:

- History of a penetrating globe injury OS ( pliers into the eye ), with the expulsion of the lens followed by a ruptured globe repair on the same day in October of 2015
- After Globe repair, the patient was referred for a scleral/PROSE lens to improve vision

Discussed the option of custom scleral lenses

- Goal to improve vision at all distances with scleral lenses

BCVA with manifest refraction

OD: +0.25-1.00 X009 20/20

OS: +12 CF @2 feet

Pachymetry

OD 487

OS 497

Right eye dominant. History of a penetrating globe injury OS, with the expulsion of the lens followed by a ruptured globe repair on the same day in October of 2015

Anterior segment examination

Aphakia OS, Corneal scarring OS from penetrating injury, Iris trauma

### *Eaglet Eye ESP Performed*

A diagnostic lens was then selected ( If we had used Maxim 3D for the diagnostic fit, Eaglet suggested 1st lens fit )

Maxim 3D

OS

BC: 7.50

Sag: 5.760

Dia/OZ: 16.40/9.0

SOR (add value): 20/200 vision

### *Initial Lenses*

Lens 1 – based on a diagnostic fitting set and fitting notes, a different lens was used since we had originally planned on fitting in a Zenlens. A Maxim 3D was made based on this diagnostic lens.

OS initial diagnostic lens – Z-21 Oblate

BC: 9.10

Sag: 5100

Dia/CT: 17.00/0.35

Power: -2.00

SOR (add value): +18.00 20/200 vision OS ( from counting fingers at 2 ft )

Notes on fit: Need to increase central SAG, 50um of space to the cornea, slightly de-centered inferiorly

## 1st Ordered Lens

OS – Maxim 3D

BC: 7.50

Sag: 5760

Dia/OZ: 16.50/9.1

Power: +13.00

Angle off-set 11°

SOR (add value): PLANO 20/200 vision

*Notes on fit: No changes needed. Pt is comfortable, SAG is 350um on insertion, mid periphery / limbal / haptic zones look great.*

## Clinical Pearls

- The amount of functional clear cornea that a practitioner has available to work with is very important
- Scarring can be a limiting factor in potential vision with scleral lenses
- Even if you use a different diagnostic lens ( not Maxim ) you can achieve fantastic results when ordering Maxim 3D
- Empirical fitting in this case resulted in 1 lens being created with no need for fit modifications or rx adjustment
- With a great Eaglet scan, we can reduce the amount of visits for the patient and deliver a superior product. More of a wow factor, pt's appreciate the new technology

**SCAN. SEND. DISPENSE.**

**(800)-525-2470**

**WWW.ACCULENS.COM**

**Free Training Available**

